



Colorez la fraction visuelle pour obtenir la fraction équivalente.

Ex) $\frac{1}{4} = \frac{3}{12}$

1) $\frac{1}{2} =$

2) $\frac{4}{6} =$

3) $\frac{2}{6} =$

4) $\frac{0}{6} =$

5) $\frac{6}{8} =$

6) $\frac{4}{8} =$

7) $\frac{4}{4} =$

8) $\frac{2}{8} =$

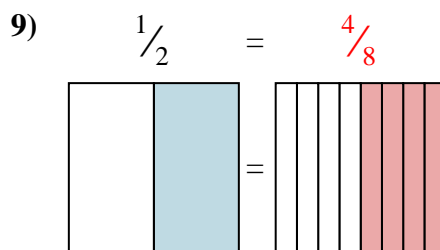
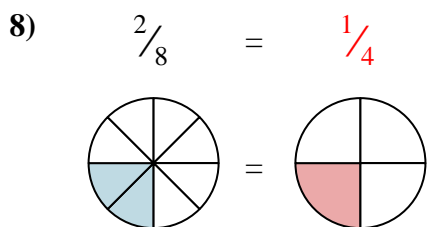
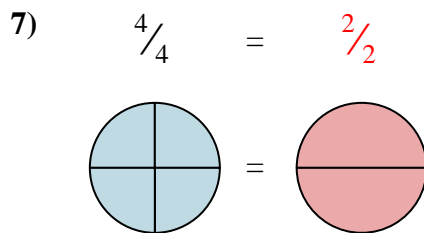
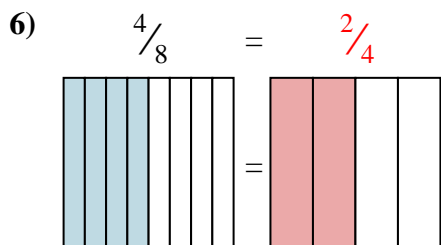
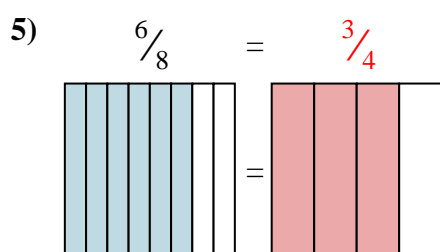
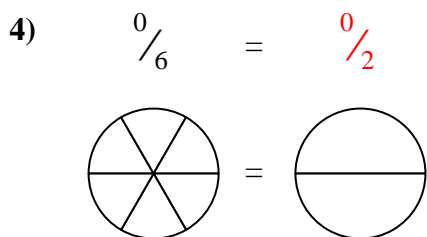
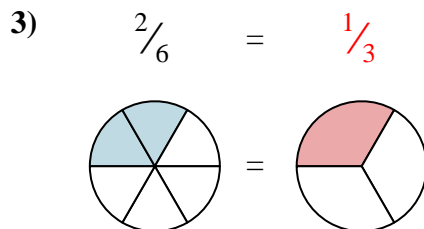
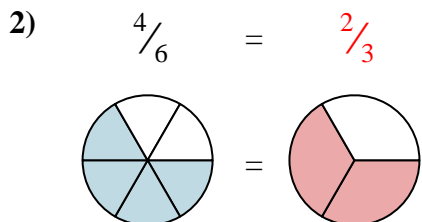
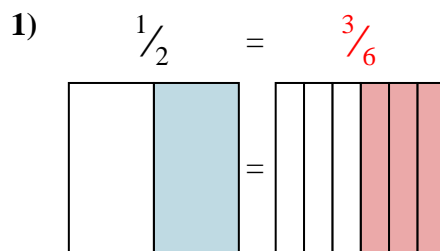
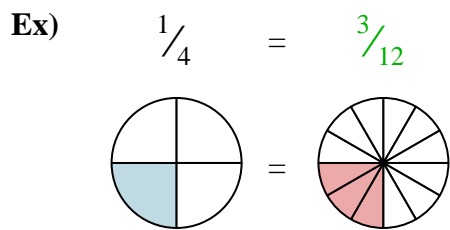
9) $\frac{1}{2} =$

Réponses

- Ex. $\frac{3}{12}$
1. _____
2. _____
3. _____
4. _____
5. _____
6. _____
7. _____
8. _____
9. _____



Colorez la fraction visuelle pour obtenir la fraction équivalente.



Réponses

- Ex. $\frac{3}{12}$
1. $\frac{3}{6}$
2. $\frac{2}{3}$
3. $\frac{1}{3}$
4. $\frac{0}{2}$
5. $\frac{3}{4}$
6. $\frac{2}{4}$
7. $\frac{2}{2}$
8. $\frac{1}{4}$
9. $\frac{4}{8}$